

Developer Assistant™

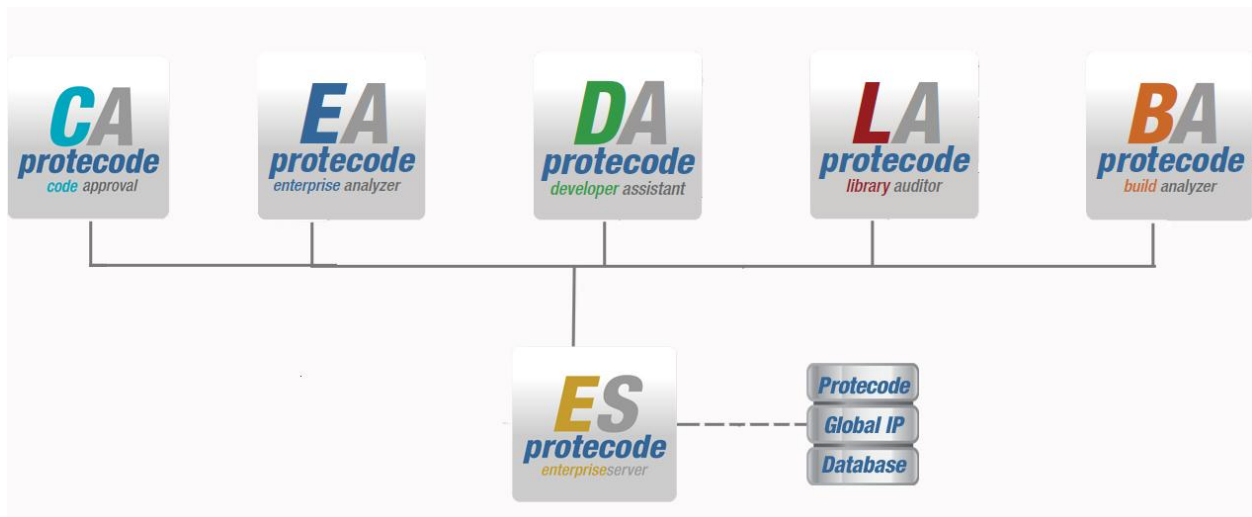
User Guide

Release 4.5.0.0

October 2011

Table of Contents

- 1. Introduction..... 3**
- 2. System Requirements 3**
- 3. Installation..... 3**
 - 3.1. Uninstalling..... 3
- 4. Login..... 4**
 - 4.1. Enterprise Server Settings..... 4
- 5. Setup..... 4**
 - 5.1. Manage Folders..... 5
 - 5.2. Help & About..... 5
- 6. Usage..... 6**
 - 6.1. Policy Violations 6
 - 6.2. Partial File Matches..... 7



1. Introduction

Protecode Developer Assistant (DA) is the only real-time preventive IP management solution on the market. DA is a client application that operates on a developer workstation and monitors license compliance as code is introduced to the monitored workspace. DA detects new or modified source and binary code (introduced by cut/paste or drag/drop of code snippets, or copying complete files or folders from an external source such as a web site or a memory stick), logs it, analyzes it, and identifies its IP attributes, checking them against enterprise IP policies and provides real time feedback. DA uses the services of the Enterprise Server containing the Core IP Analysis Engine.

Protecode DA integrates seamlessly with various developer platforms, and works with every IDE or code editor. The process is completely transparent and unobtrusive, with no impact on existing development practices. It is a distributed license compliance solution with centralized control in the Enterprise Server (ES). Policies are created and disseminated centrally through an administration application. DA is part of the System 4 portfolio, ensuring software license compliance in a real-time preventive manner.

2. System Requirements

- CPU: Multi core desktop processor
- Memory: 2GB-4GB RAM recommended
- Disk Space: 2GB+
- Operating Systems: Microsoft Windows XP SP3/Vista/7, Linux (Debian, Ubuntu, SuSE, Red Hat, other RPM-based distributions)
- Web browser for viewing reports (cookies must be enabled)
 - Internet Explorer 7.0 or higher
 - Firefox 2.0.0.11 or higher

3. Installation

Microsoft Windows

Run the Protecode_DA_Setup.exe file and follow the instructions presented by the installation wizard. The following Start menu shortcuts are created:

- **Developer Assistant** – starts the application
- **Uninstall** – removes the application from your system

Linux

Contact support@protecode.com for installation instructions.

3.1. Uninstalling

Either use the Uninstall shortcut from the Start menu folder, or use the standard Windows Add/Remove Programs under Control Panel.

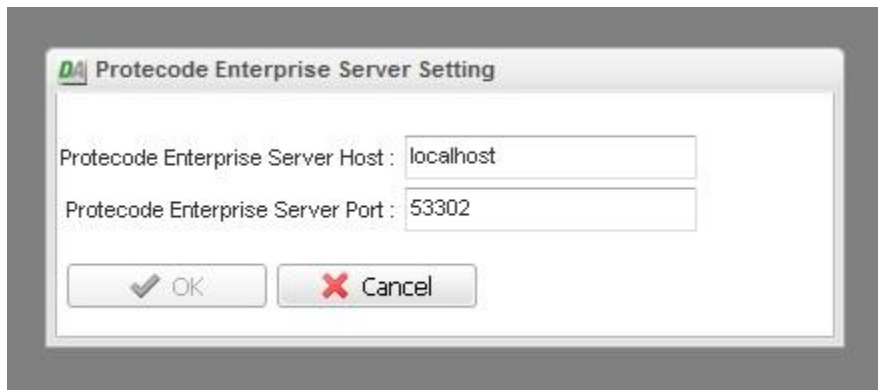
4. Login

After starting the application, a web browser prompt is presented with a login window. If this is the first user login to DA, the Username is “admin” and Password is “password”.



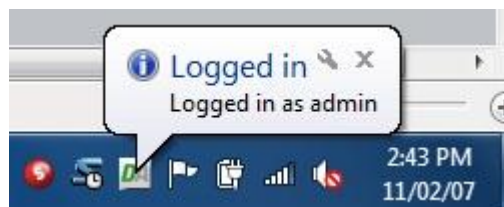
4.1. Enterprise Server Settings

This setting allows configuration of Enterprise Server settings which provides connection to the local pedigree database and IP Signatures Database (GIPS/EIPS).



5. Setup

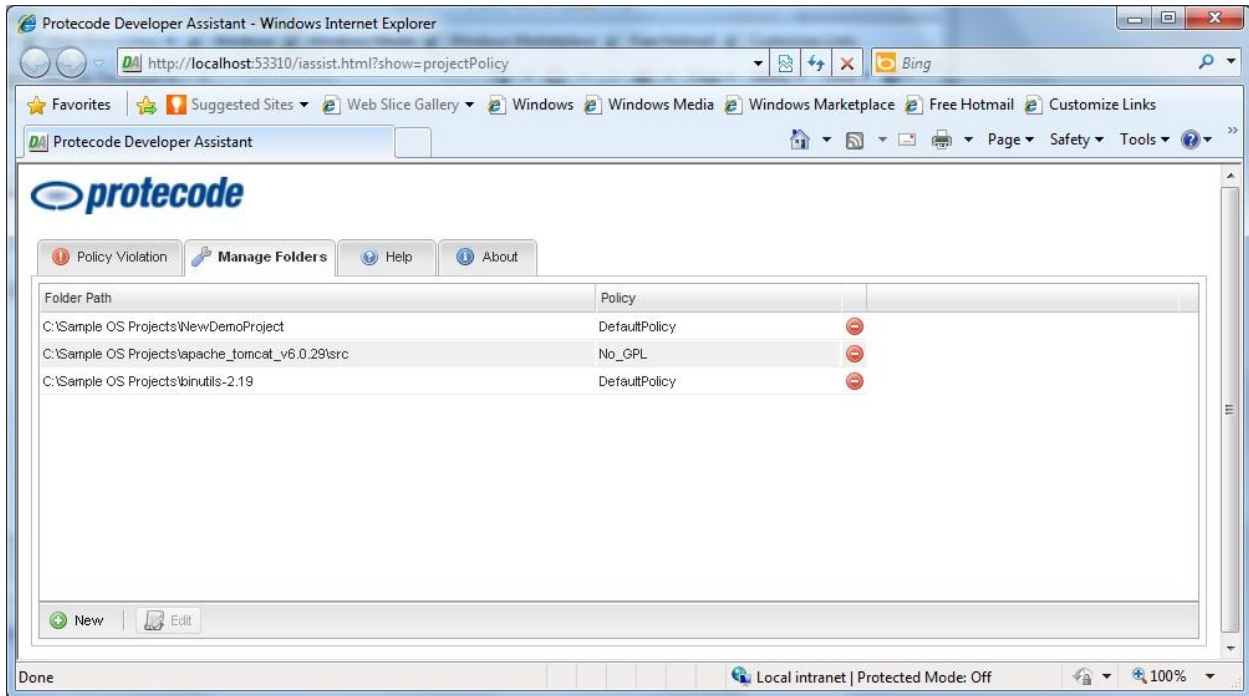
After logging in, the DA icon appears on the taskbar confirming the user is active.



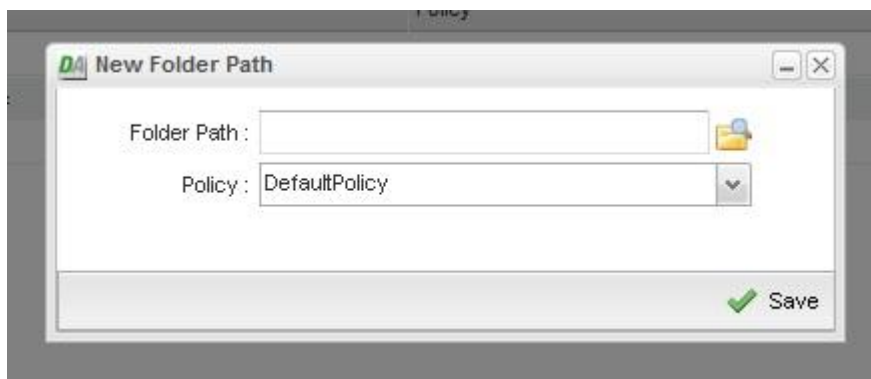
By right-clicking on this icon, the user can assign policies to specific folders, view policy violations, or sign-out of the application.

5.1. Manage Folders

A user can assign different policies to govern different folders. When a specific folder is analyzed, the associated policy will be applied. For example, a user may want to monitor a source code folder with one policy; however a folder containing binary files may be monitored with another policy. This is easily customizable from the Manage Folder interface.



When the user clicks on “New”, a project path and policy can be defined. By default the DefaultPolicy is selected which will create a “violation” on any occurrence of known licenses. As a result, when code is introduced to the monitored folder, and a violation is reported.



Once a folder and policy are setup, click “Save”.

5.2. Help & About

A user can access the DA user guide by clicking on the Help tab. A user can also view product information (version, EULA, privacy policy, support contact info) by clicking on the About tab.

6. Usage

Once a policy has been applied to a given folder, the user can begin the normal software development process while DA is running in the background. Source and binary code can be introduced by cut/paste or drag/drop of code snippets, or copying complete files or folders from an external source such as a web site or a memory stick.

6.1. Policy Violations

Policy violations occur if identified license information violates the pre-defined policy. This license information can be either:

- Local to the file: a license statement in the file header, or
- GPS match: a matching file from the Internet with a project/file license

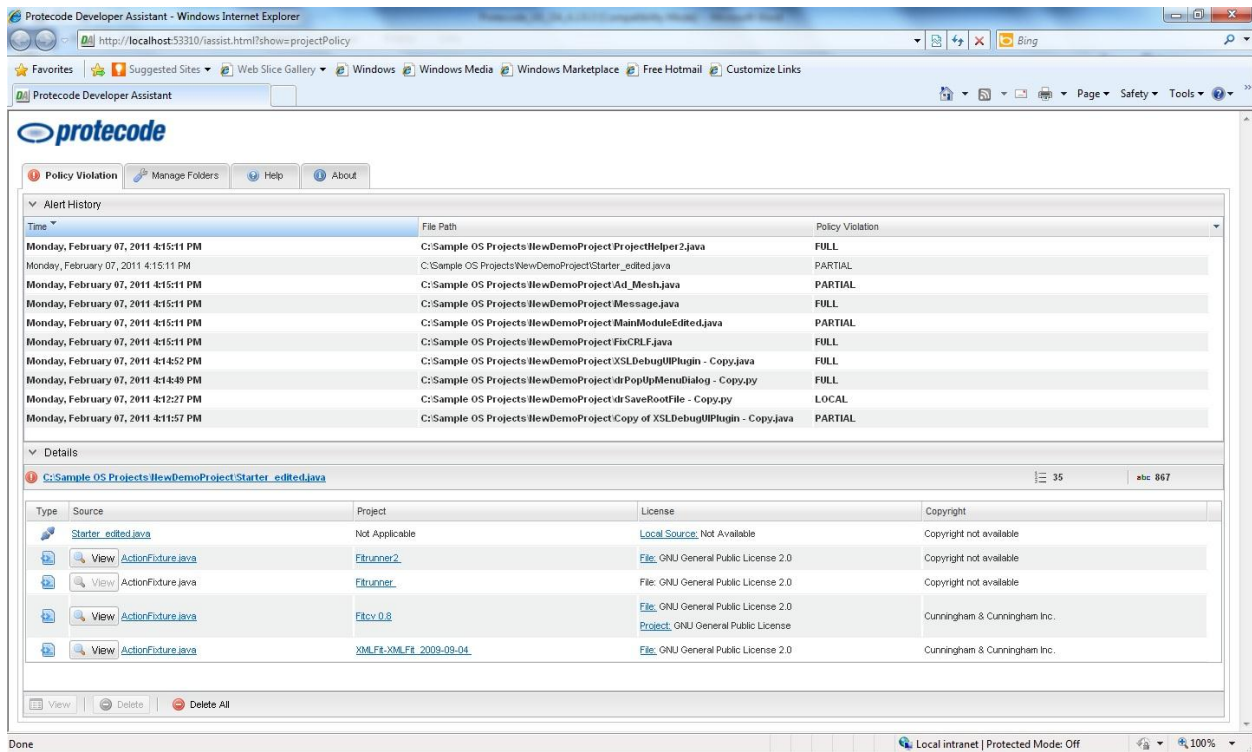
The taskbar icon will turn red and a pop-up message will appear indicating the file and license(s) in violation. This is solely local feedback to the user and not logged on the Enterprise Server (ES).



The taskbar icon will remain in this state until the violation has been viewed or the violating file has been corrected. To view violations, the user can either:

- Click on the pop-up message, or
- Right-click on the taskbar icon and select Policy Violations to view the violation details.

The user can then choose to view the violation details or delete the entry entirely. To view the details, select the entry and click “View” at the bottom on the window. The bottom pane of the window will then expand. Information on the violating file, project, license, and copyright are given.

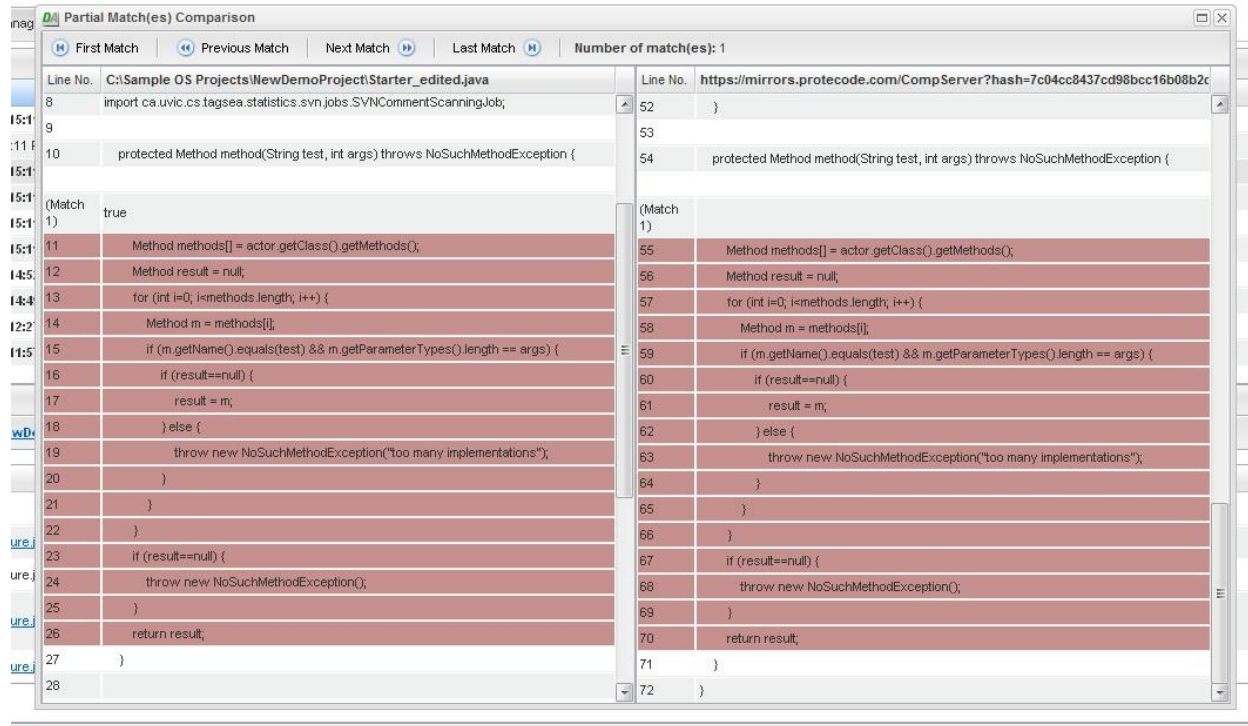


6.2. Partial File Matches

Files which have generated a partial file (code snippet) violation with a signature in the IP Signatures database are shown on the report with a:

- Partially filled violation icon in the second column, and
- “Partial” button in the Source column

Clicking on this icon opens a new window in which the user’s local file is displayed on the left side, and the matching external source file is displayed on the right side.



Each color-coded section represents a different match between the two files. It is common for multiple code snippets to match in a single source.